

# CHILD SERVICES OF Sioux Falls

■ JUNE, JULY, AUGUST  
■ REGION FIVE

*This publication was funded by the Department of Social Services, Division of Child Care Services.*

## EMERGENCY PREPAREDNESS

Disasters and emergencies can happen any time; that's no surprise to anyone living in South Dakota. Ensuring the safety of the children in our care must be our highest priority. We need to plan and prepare in advance for the best outcomes in every situation, whether the emergency is a natural disaster, related to health, or your facility.



Not sure where to start, or want to review your current plan? Follow these tips from the National Association of Child Care Resource & Referral Agencies and Save the Children:

- Develop a written plan that covers children's safety and protection in a variety of situations
- Include plans to shelter-in-place, lock down, or evacuate as needed
- Gather and maintain emergency resources for children and staff; consider 'portability' in case of evacuation
- Remember the needs of anyone with a chronic health condition or other special needs
- Keep updated, accessible, non-electronic emergency contact information for everyone in your program
- Include and practice a plan for reunification and communication with families and emergency services before, during, and after emergencies
- Ensure that **EVERYONE** knows and regularly practices your safety plans. That includes center staff, home-based program family members, children, families, and any other associated adults
- Don't forget to take steps to protect necessary program information and resources so your program can continue to provide child care after an emergency

Work to create a plan based on your childcare program's needs. Think about who and what you're planning for, how you'll find out about alerts, and what role each person will play. Ask for input and ideas from everyone involved, including the children—you may find that they'll think of something you wouldn't have considered.

It's not enough to develop a good plan. You also need to regularly practice, maintain, and update your plan; every 6 months is best. Please reach out for assistance as needed. Childcare-specific planning tools, emergency checklists, and other resources are available to you from the Centers for Disease Control and Prevention, SD Child Care Services, and Sanford CHILD Services.

## Meet the Staff

ECE REGION 5 DIRECTOR  
Dianna Rajski

CHILD MANAGER  
Terra Johnson

CHILD SUPERVISOR  
Margie Schade

### TRAINING STAFF

Jessica Stokes  
Katrina Anderson  
Mindy Greenfield  
Nancy Raether  
Naomi Hoffman  
Sara Tirrel  
Sarah Shin  
Sue Illg  
Teri Pieters

SANFORD CHILDREN'S  
CHILD SERVICES  
5015 S Western Ave  
Suite 120  
Sioux Falls, SD 57108  
Phone: (605) 312-8390

CHILD SERVICES  
OFFICE HOURS  
Monday-Friday  
8 a.m. – 5 p.m.

EMAIL  
[childsrv@sanfordhealth.org](mailto:childsrv@sanfordhealth.org)

WEBSITE  
[www.sanfordhealth.org/  
CHILDServices](http://www.sanfordhealth.org/CHILDServices)



# General Learning Opportunities

Classes for caregivers of all ages of children. Location details given upon registration

**(O):** Qualify for required orientation training topics

**(Q):** Training series identified in proposed South Dakota QRIS Framework. Registration is encouraged for the entire series

DATE/TIME	CLASS TITLE	FEE	LOCATION	LICENSING/ PATHWAYS
Thursday, June 18 1:30 – 2:30 p.m.	<b>Building the Brain Through Play</b> Playful learning builds children’s brains. Guided play and other support strategies provide meaningful learning opportunities for children.	\$5	Online	Child Growth & Development
Monday, June 29 7 – 8 p.m.	<b>Make It Today: Visual Schedules</b> Learn about the importance of using a visual schedule in your daily routine and make your own to take back to your program.	\$0	Sioux Falls	Age Appropriate Planning
Tuesday, July 14 6:30 – 7:30 p.m.	<b>Nuts and Bolts of Temperament</b> Children’s individual temperament cause them to react and respond differently. Explore how to care for children of varying temperaments.	\$5	Online	Guidance & Behavior Management
Tuesday, July 14 7:30 – 8:30 p.m.	<b>Transition Magician</b> Learn how to provide effective transition techniques to guide behavior and make the day run smoother.	\$5	Online	Guidance & Behavior Management
Saturday, August 1 9 – 10 a.m.	<b>A Bit About Biting</b> Just because biting is a common behavior for young children’s doesn’t mean you should ignore it. Gain ways to decrease biting in the classroom.	\$0	Yankton	Guidance & Behavior Management
Saturday, August 1 11:30 – 12:30 p.m.	<b>Expelling Expulsion</b> Learn about the impact of suspension and expulsion in early childhood and strategies for preventing expulsion in the future.	\$0	Yankton	Guidance & Behavior Management
<b>INS AND OUTS OF LESSON PLANNING</b>				
<b>(Q)</b> Training series identified in proposed South Dakota QRIS Framework. Registration is encouraged for the entire series.				
Monday, June 1 7:30 – 9 p.m.	<b>Lesson Plan Basics</b> Explore strategies & techniques for creating lesson plans based on children’s needs and interests.	\$5	Online	Program Management & Regulations
Monday, June 8 7:30 – 9 p.m.	<b>Developing and Creating Lesson Plans</b> Explore a variety of lesson plans, evaluate activity ideas to meet children’s needs, and how to plan in a timely fashion.	\$5	Online	Child Growth & Development
Monday, June 15 7:30 – 9 p.m.	<b>Using Child Interests, Themes and Projects</b> Learn about different approaches to planning and how each can lead to quality learning for children.	\$5	Online	Age Appropriate Planning
Monday, June 22 7:30 – 9 p.m.	<b>Purposeful Activities</b> Bring together all the lesson planning pieces and share creative ideas that have worked.	\$5	Online	Age Appropriate Planning

# Early Learning Guidelines for Caregivers

**(Q)** Training series identified in proposed South Dakota QRIS Framework. Registration is encouraged for the entire series.

DATE/TIME	CLASS TITLE	FEE	LOCATION	LICENSING/ PATHWAYS
Thursday, August 6 7:30 – 9 p.m.	<b>Approaches to Learning</b> The use of play, everyday tasks, and an enriching environment to support young children’s creativity, imagination and increasingly complex & challenging play.	\$5	Online	Age Appropriate Planning
Thursday, August 13 7:30 – 9 p.m.	<b>Social &amp; Emotional Development</b> Supporting foundational social & emotional skills such as relationship building and recognizing, managing, & expressing emotions.	\$5	Online	Guidance & Behavior Management
Thursday, August 20 7:30 – 9 p.m.	<b>Communication, Language &amp; Literacy</b> Strategies to set up an environment that encourages exploration, play and social interactions for young children and the development of literacy skills and oral language.	\$5	Online	Interpersonal Communication & Relationships
Thursday, August 27 7:30 – 9 p.m.	<b>Cognitive, Health &amp; Physical Development</b> Building relationships and providing an environment & activities to support reasoning, motor development, and health & safety skills.	\$5	Online	Child Growth & Development

# Social Emotional Learning Opportunities

Ideas and insight to positive guidance and behavior management techniques. Location details given upon registration

DATE/TIME	CLASS TITLE	FEE	LOCATION	LICENSING/ PATHWAYS
Thursday, June 18 6:30 – 7:30 p.m.	<b>A Circle of Support for Social Emotional Development</b> Explore how to work with parents to support children's social emotional needs.	\$5	Online	<i>Partnerships with Parents</i>
Monday, August 17 7 – 8 p.m.	<b>Make It Today: Visual Schedules</b> Learn about the importance of using a visual schedule in your daily routine and make your own to take back to your program.	\$0	Sioux Falls	<i>Age Appropriate Planning</i>
Tuesday, August 18 7:30 – 8:30 p.m.	<b>Coping Skills and Young Children</b> Coping skills are critical to building resilience and a child's wellbeing. Learn ways to build coping skills with the children in your care.	\$0	Dell Rapids	<i>Guidance &amp; Behavior Management</i>
<b>INFANT TODDLER SOCIAL AND EMOTIONAL FOUNDATIONS FOR LEARNING</b> (Q) Training series identified in proposed South Dakota QRIS Framework. Registration is encouraged for the entire series.				
Wednesday, August 5 7:30 – 9 p.m.	<b>Importance of Relationships</b> Social emotional development begins at birth & continues throughout life, providing a foundation for meaningful relationships & learning.	\$5	Online	Guidance & Behavior Management
Wednesday, August 12 7:30 – 9 p.m.	<b>Creating Supportive Environments &amp; Routines</b> Explore ways to create meaningful & engaging learning spaces which promote social emotional development & support appropriate behaviors.	\$5	Online	Learning Environments
Wednesday, August 19 7:30 – 9 p.m.	<b>Social Emotional Teaching Strategies</b> Focus on a variety of approaches to support the development of social emotional skills; identify strategies to support social emotional literacy.	\$5	Online	Guidance & Behavior Management
Wednesday, August 26 7:30 – 9 p.m.	<b>Supporting Children's Success</b> Explore the meaning of behaviors & what a child may be attempting to communicate, & how learning social emotional skills affects all development.	\$5	Online	Guidance & Behavior Management
<b>PRESCHOOL SOCIAL AND EMOTIONAL FOUNDATIONS FOR LEARNING</b> (Q) Training series identified in proposed South Dakota QRIS Framework. Registration is encouraged for the entire series.				
Wednesday, June 3 7:30 – 9 p.m.	<b>Importance Of Relationships</b> Relationships affect children's social emotional development & behaviors. Learn to support positive behavior & build relationships.	\$5	Online	<i>Guidance &amp; Behavior Management</i>
Wednesday, June 10 7:30 – 9 p.m.	<b>Environment, Routines, And Strategies</b> Environmental elements, their impact on children's development & behaviors, and strategies to support children's positive social behaviors.	\$5	Online	<i>Learning Environments</i>
Wednesday, June 17 7:30 – 9 p.m.	<b>Social Emotional Teaching Strategies</b> Strategies for supporting the development of friendship skills, & activities that build children's feeling vocabularies.	\$5	Online	<i>Guidance &amp; Behavior Management</i>
Wednesday, June 24 7:30 – 9 p.m.	<b>Supporting Children's Success</b> Learn to react to challenging behaviors and support children learning problem solving skills and to handle anger & disappointment.	\$5	Online	<i>Guidance &amp; Behavior Management</i>

# Infant/Toddler Learning Opportunities

Classes with an emphasis on caring for children six weeks to three year old. Location details given upon registration

DATE/TIME	CLASS TITLE	FEE	LOCATION	LICENSING/ PATHWAYS
Monday, June 15 1:30 – 2:30 p.m.	<b>Giving the Gift of a Secure Attachment</b> Learn how a secure bond of attachment creates resilience in children, reduces toxic stress and prevents challenging behaviors.	\$5	Online	Child Growth & Development
Saturday, August 1 10:15 – 11:15 a.m.	<b>Buffering Babies and Toddlers from Toxic Stress</b> Babies and Toddlers can be sponges for stress. Learn how to buffer young children from the negative effects of stress by providing responsive, predictable, nurturing care.	\$0	Yankton	Age Appropriate Planning
Tuesday, August 18 6:30 – 7:30 p.m.	<b>Clingy Babies and Toddlers? Build a Circle of Security</b> Learn what challenging behaviors are really saying. Learn how you can build a secure attachment relationship to make caring for young children easier and more enjoyable.	\$0	Dell Rapids	Guidance & Behavior Management

## INFANT/TODDLER ENTRY LEVEL SERIES

(Q) Training series identified in proposed South Dakota QRIS Framework. Registration is encouraged for the entire series.

Thursday, July 9 7:30 – 9 p.m.	<b>Ages Of Infancy</b> Developmental needs of infants and toddlers as they grow and explore.	\$5	Online	Child Growth & Development
Thursday, July 16 7:30 – 9 p.m.	<b>Social Emotional Development: Understanding Temperament</b> Understanding each infant and toddler's social & emotional development and temperament; appropriate guidance techniques.	\$5	Online	Guidance & Behavior Management
Thursday, July 23 7:30 – 9 p.m.	<b>How Young Children Learn: Appropriate Environments For Infants &amp; Toddlers</b> Providing appropriate environments and learning experiences that support the learning needs of infants and toddlers.	\$5	Online	Age Appropriate Planning
Thursday, July 30 7:30 – 9 p.m.	<b>Health &amp; Safety For Infants &amp; Toddlers</b> Best basic health and safety practices in infant and toddler care.	\$5	Online	Program Health & Safety

## Preschool Learning Opportunities

Classes with an emphasis on caring for three to five year old children. Location details given upon registration

DATE/TIME	CLASS TITLE	FEE	LOCATION	LICENSING/ PATHWAYS
Monday, July 13 7 – 8 p.m.	<b>Increasing Reading Engagement: The Picture Walk</b> Use a picture walk to preview pictures & familiarize the child with a story before introducing textures, asking questions, & making observations & predictions.	\$0	Sioux Falls	Age Appropriate Planning

## Management Learning Opportunities

(Q) Training series identified in proposed South Dakota QRIS Framework. Registration is encouraged for the entire series.

DATE/TIME	CLASS TITLE	FEE	LOCATION	LICENSING/ PATHWAYS
Tuesday, July 7 7:30 – 9 p.m.	<b>Management Fundamentals</b> Learn about the importance of effective program management and explore how it affects the child care setting.	\$5	Online	Program Management & Regulations
Tuesday, July 14 7:30 – 9 p.m.	<b>Fiscal Fundamentals</b> Learn about tools to help child care programs plan, monitor & track income and expenses. Explore budgets, balance sheets, profit & loss, and more.	\$5	Online	Program Management & Regulations
Tuesday, July 21 7:30 – 9 p.m.	<b>Human Resources Fundamental</b> Learn about staff recruitment, retention, training and staff evaluations to maintain a successful child care program.	\$5	Online	Program Management & Regulations
Tuesday, July 28 7:30 – 9 p.m.	<b>Power of Partnerships</b> Increase skills for building a strong community and team of committed staff.	\$5	Online	Interpersonal Communication & Relationships

## Out of School Time Learning Opportunities

Classes with an emphasis on caring for school age children. Location details given upon registration

### OUT OF SCHOOL TIME ENTRY LEVEL SERIES

(Q) Training series identified in proposed South Dakota QRIS Framework. Registration is encouraged for the entire series.

DATE/TIME	CLASS TITLE	FEE	LOCATION	LICENSING/ PATHWAYS
Thursday, June 4 7:30 – 9 p.m.	<b>Child Growth and Development</b> Fostering the growth and development of children through appropriate environment, activities, interactions, and inclusion.	\$5	Online	Child Growth & Development
Thursday, June 11 7:30 – 9 p.m.	<b>Program Health &amp; Safety</b> The importance of implementing teaching practices that promote child health and safety.	\$5	Online	Program Health & Safety
Thursday, June 18 7:30 – 9 p.m.	<b>Fostering Learning Environments</b> Learn how planning high quality program activities and experiences will promote children's success.	\$5	Online	Learning Environments
Thursday, June 25 7:30 – 9 p.m.	<b>Managing and Planning for Groups</b> Learn about managing groups, modeling leadership, and effective use of routines and schedules.	\$5	Online	Guidance & Behavior Management

## fitCare Learning Opportunities

Classes to help caregivers provide a healthy lifestyle program for children in all child care settings. All fitCare classes provide caregivers with activities to help teach children about making healthy choices. Location details given upon registration

DATE/TIME	CLASS TITLE	FEE	LOCATION	LICENSING/ PATHWAYS
Tuesday, June 9 6:30 – 8:30 p.m.	<b>MOVE Your Body</b> Children don't naturally move enough in their day. Learn ways to help children get enough move time in their day.	\$0	Online	Child Growth & Development Age Appropriate Planning
Tuesday, August 11 6:30 – 8:30 p.m.	<b>MOVE Your Body</b> Children don't naturally move enough in their day. Learn ways to help children get enough move time in their day.	\$0	Online	Child Growth & Development Age Appropriate Planning

## Family Child Care Provider Focus Learning Opportunities

Classes to help caregivers provide a healthy lifestyle program for children in all child care settings. Location details given upon registration

FAMILY CHILD CARE BEST PRACTICE SERIES				
<b>(Q)</b> Training series identified in proposed South Dakota QRIS Framework. Registration is encouraged for the entire series.				
DATE/TIME	CLASS TITLE	FEE	LOCATION	LICENSING/ PATHWAYS
Tuesday, August 4 7:30 – 9:30 p.m.	<b>Purposeful Planning: Healthy &amp; Safe Learning Environments</b> High quality practices to ensure children's physical and developmental well-being; comprehensive health & safety program planning.	\$5	Online	Program Health & Safety
Tuesday, August 11 7:30 – 9:30 p.m.	<b>Best Practices in Relationship Building</b> Best practices for caring, respect & committed relationships with and between children & families; balancing parenting & caregiving roles.	\$5	Online	Interpersonal Communication & Relationships
Tuesday, August 18 7:30 – 9:30 p.m.	<b>Developmentally Appropriate Learning activities in Family Child Care</b> High quality practices for providing activities & materials to support children in developing skills & gaining an understanding of their world.	\$5	Online	Child Growth & Development
Tuesday, August 25 7:30 – 9:30 p.m.	<b>Professional &amp; Business Practices in Family Child Care</b> High quality, caring and ethical best practices for professional business policies & procedures.	\$5	Online	Program Management & Regulations

## Rural Child Care Provider Learning Opportunities

Classes offered in rural areas in southeastern South Dakota. Location details given upon registration

DATE/TIME	CLASS TITLE	FEE	LOCATION	LICENSING/ PATHWAYS
Saturday, August 1 9 – 10 a.m.	<b>A Bit About Biting</b> Just because biting is a common behavior for young children doesn't mean you should ignore it. Gain ways to decrease biting in the classroom.	\$0	Yankton	Guidance & Behavior Management
Saturday, August 1 10:15 – 11:15 a.m.	<b>Buffering Babies and Toddlers from Toxic Stress</b> Babies and Toddlers can be sponges for stress. Learn how to buffer young children from the negative effects of stress by providing responsive, predictable, nurturing care.	\$0	Yankton	Age Appropriate Planning
Saturday, August 1 11:30 – 12:30 p.m.	<b>Expelling Expulsion</b> Learn about the impact of suspension and expulsion in early childhood and strategies for preventing expulsion in the future.	\$0	Yankton	Guidance & Behavior Management
Tuesday, August 18 6:30 – 7:30 p.m.	<b>Clingy Babies and Toddlers? Build a Circle of Security</b> Learn what challenging behaviors are really saying. Learn how you can build a secure attachment relationships to make caring for young children easier and more enjoyable.	\$0	Dell Rapids	Guidance & Behavior Management
Tuesday, August 18 7:30 – 8:30 p.m.	<b>Coping Skills and Young Children</b> Coping skills are critical to building resilience and a child's wellbeing. Learn ways to build coping skills with the children in your care.	\$0	Dell Rapids	Guidance & Behavior Management



# Pathways to Professional Development Series

• Registration per class is not available. Participants must register for all classes that are part of a course.

• Out-of-class time work required for course credit.

• Complete your CDA and take all three courses of the Pathways to Professional Development Series to receive college credit when you enroll in participating South Dakota colleges and universities.

DATE/TIME	CLASS TITLE	FEE	LOCATION	LICENSING/ PATHWAYS
<b>YOU THE PROFESSIONAL (SDCDA 320)</b>				
Monday, June 1 7:30 – 10 p.m.	<b>Exploring Adult Learning Styles</b> Influencing factors and theories of adult learning; individual learning styles	\$10	Online	Interpersonal Communication & Relationships
Monday, June 8 7:30 – 10 p.m.	<b>Best Practice: Program Administration and Leadership</b> An overview of staff supervision and development strategies, basic fiscal management skills, and 'best practice' program administration policies and procedures.			Program Management & Regulations
<b>MEETING CHILDREN'S BASIC NEEDS (SDCDA 300)</b>				
Monday, June 15 7:30 – 10 p.m.	<b>Providing a Safe &amp; Healthy Environment</b> Early childhood health and safety standards and applications.	\$10	Online	Program Health & Safety
Monday, June 22 7:30 – 10 p.m.	<b>Providing for Children's Nutritional Needs</b> Professional and personal use of USDA SuperTracker resources, childcare nutritional standards & responsibilities.			Nutrition for Children
<b>MEETING CHILDREN'S BASIC NEEDS (SDCDA 300)</b>				
Monday, June 29 7:30 – 10 p.m.	<b>Theories of Child Development: Prenatal, Birth &amp; Early Brain Development</b> Overview of the latest research in early brain development and its impact and applications for ECE professionals.	\$25	Online	Child Growth & Development
Monday, July 6 7:30 – 10 p.m.	<b>Theories of Child Development: Dewey &amp; Montessori</b> Overview of research methods and the history of theories of child development; the theories of Dewey & Montessori.			Child Growth & Development
Monday, July 13 7:30 – 10 p.m.	<b>Theories of Child Development: Erikson, Bronfenbrenner &amp; Bandura</b> Developmental theories of Erikson, Bronfenbrenner & Bandura; ongoing critical thinking and comparison of various theories.			Child Growth & Development
Monday, July 20 7:30 – 10 p.m.	<b>Theories of Child Development: Piaget &amp; Vygotsky</b> Developmental theories of Piaget & Vygotsky; professional and personal implications of Gardner's theories of multiple intelligences.			Child Growth & Development
Monday, July 27 7:30 – 10 p.m.	<b>Growth and Development of School-Age Children</b> Overview of school age children's growth and development.			Child Growth & Development

## ECE Class Policy

To ensure accurate class registration, individuals must call to register for classes.

### e-Learning Online Classes

REQUIREMENTS: Computer with internet connectivity. Adobe Flash Player 10.1 or higher, Free Flash Player – download at [www.adobe.com](http://www.adobe.com).

Due to technical incompatibility, do not use smart phones or access online classes

Class registration is closed 48 hours prior to scheduled class start time. Monday class registration is closed at 5 p.m. on the Thursday prior to the class. Class registration is secured once payment is received. Participants are emailed the class link within 24 hours prior to scheduled class start time.

In order to receive credit for online classes, participants must:

1. Log into class within 5 minutes of the class start time.
2. Demonstrate attendance by participating in class polls and chats
3. Complete 3 learning statements at the end of the class.

### Face to Face Classes

1. Class participants arriving later than 10 minutes past the class start time will not be allowed to attend class as the facility doors will be locked.
2. CHILD Services strives to provide a positive learning environment for all participants. If a class participant disrupts the positive learning environment, the participant risks not being given credit for the class.
3. CHILD Services respects the attention needs of young children and the learning needs of class participants. In order to maintain an appropriate learning environment for all class attendees, children are not allowed to attend classes with a class participant.

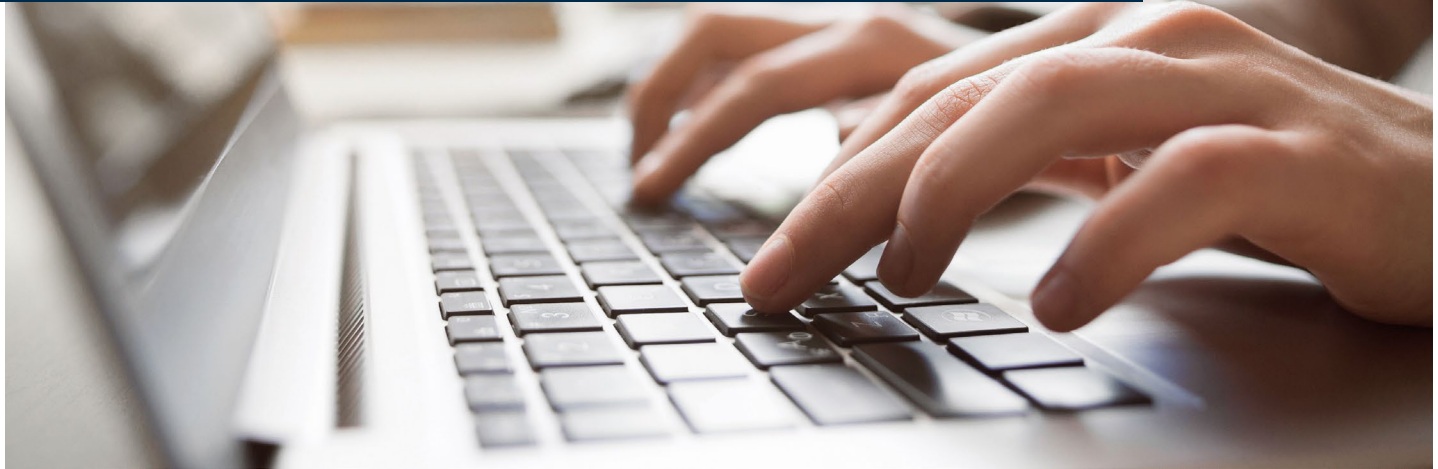
## JUST A REMINDER

Cancellation – Please remember, if you register for a class and are unable to attend, it is a courtesy to call and cancel your registration.

# PROVIDERS.....YOU ASKED & WE LISTENED!

Starting 6/1/2020 – Online registration will be available. To register online, follow the steps below.

1. Go to [www.sanfordhealth.org/classes-and-events](http://www.sanfordhealth.org/classes-and-events)
2. Filter by 'Daycare Providers' under the Category drop down
3. Locate the class you want to attend
4. Click on the class to find the online class registration information



## Child Development Associate

Classes to prepare participants to apply for a Child Development Associate (CDA) credential

### What is CDA Hybrid?

- CDA Hybrid is a combination of online and in-person classes.
- Each CDA course is three online classes and one in-person class.

### Why Earn a CDA?

1. Increase your **professional knowledge**.
2. Have **confidence** when working with the children in your care.
3. Establish your **credibility** with parents.
4. Gain **professional recognition** in your field.
5. **Articulates to associate or Bachelor degree credits** in higher education program in South Dakota

### How many classes do I need to take to apply for my CDA?

- 32 classes in total (8 courses with 4 classes each)

### What's the cost for CDA classes and CDA Credential application?

- \$95 registration fee (covers the cost of books)
- \$700 course tuition fee (includes classes and paperwork assistance)
- \$425 to apply for your CDA Credential

\* Scholarships and payment plans are available based on eligibility

### I'm interested but have questions. What's my next step?

Call to speak with our CDA Specialist.

### I want to take CDA classes. What's my next step?

Call for a CDA application

### I've finished taking the CDA classes and ready to apply for my credential. What's my next step?

Check out [www.cdacouncil.org](http://www.cdacouncil.org) or call CHLD Services and talk to our CDA Specialist.

### What do I need to do to renew my CDA Credential?

You can go to [www.cdacouncil.org](http://www.cdacouncil.org) and find out how to renew your certification.

Fall 2020 CDA Starts  
September 14!

Benefits of CDA Hybrid  
Combines the best of both  
class types!

#### Online classes provide:

- Live interactive experiences
- Less travel time
- Convenient access

#### In-person classes provide:

- Support with assignment completion
- Networking with others
- Engaging discussions

## 2020 TRAINING SCHEDULE

JUNE/JULY/AUGUST

These classes meet the South Dakota child care training requirements for licensing and registration.

## CPR & Certified First Aid (O)

(Location details given upon registration)

### CPR and First Aid Class Registration and Payment Policy:

Certified First Aid & CPR reservation is not confirmed until payment is received. If payment has not been received 24 hours prior to the start of the class, this class reservation will be given to the first participant that secures this reservation with a payment.

### CPR and First Aid Class Refund Policy:

Class cancellation is required prior to the start of class, otherwise payment will be forfeited and is non-transferrable.

Additional classes may be added check the website for updates

\*See General classes for Basic First Aid for Child Care Providers

## Heartsaver® CPR AED (O)

**CPR Policy:** This video-based, instructor-led course teaches adult, child and infant CPR, AED use, and how to relieve choking. This course teaches skills with AHA's practice-while-watching technique, which allows instructors to observe the students and provide feedback.

### 2020 Class Dates:

Saturday, June 20 | 8:30 – Noon  
Tuesday, June 23 | 6:30 – 10 p.m.  
Saturday, July 11 | 8:30 – Noon  
Saturday, July 18 | 8:30 – Noon  
Tuesday, July 28 | 6:30 – 10 p.m.  
Saturday, August 22 | 8:30 – Noon  
Tuesday, August 25 | 6:30 – 10 p.m.

### Location:

Sioux Falls  
Sioux Falls  
Sioux Falls  
Sioux Falls  
Sioux Falls  
Sioux Falls  
Sioux Falls

### Fee/Class:

\$20  
\$20  
\$20  
\$20  
\$20  
\$20  
\$20

## Certified First Aid (O)

The American Heart Association's new Heartsaver Pediatric First Aid Course offers pediatric first aid training solutions for child care providers. This course contains information on how to manage illness and injuries in a child in the first few minutes until professional help arrives. A Heartsaver Pediatric First Aid Course Completion Card will be given to students upon successful completion of the course.

### Class Dates:

Saturday, June 20 | 1 p.m. – 3:30 p.m.

### Location:

Sioux Falls

### Fee/Class:

\$5

Check out our classes online at [www.sanfordhealth.org/CHILDServices](http://www.sanfordhealth.org/CHILDServices) Register for classes by calling (605) 312-8390 or 1-800-235-5923