

# CHILD SERVICES OF Aberdeen

■ JULY, AUGUST & SEPTEMBER  
■ REGION THREE

*This publication was funded by the Department of Social Services, Child Care Services*

## Expulsion in Early Childhood



Did you know that preschoolers are expelled at a rate three to four times higher than children in K-12th grade? Expulsion can have lasting, negative impacts on a child and his or her family. Instead of expelling children with challenging behaviors, early education programs should assess the child's needs and determine the behavioral supports necessary for the child to succeed in his or her current educational program or transition the child to a program better able to meet his or her needs.

### What is expulsion?

Expulsion is when a child is permanently removed from a childcare setting due to various reasons. Typically, challenging behavior is the main reason for expulsion from early childhood programs.

"Soft expulsion" involves repeatedly asking parents to pick up their child or to come to the center to address their child's behavioral issues.

Expulsion has negative effects on the child and family. When a child is expelled they miss out on the opportunity to learn and socialize. It can create negative thought patterns about self, learning, and teachers. Furthermore, expulsion can actually create more behavioral challenges for the child in the future.

### What causes the high rates of expulsion in early childhood?

There may be a lot of factors contributing to a child getting expelled. Most of these factors can be prevented if we are proactive and work as a team. Below are a few factors that may lead to a child getting expelled from a childcare center:

- High teacher-child ratios
- Teacher's perception or mindset
- Lack of support
- Challenging behaviors can be stressful
- Long school days
- Not knowing the negative impact of expulsion

### Strategies to prevent expulsion.

Review the following strategies to help prevent expulsion in your classroom. These strategies can be beneficial at the earliest signs of a child's behavior concerns.

- Create a predictable, supportive, high quality environment
- Develop a challenging behavior or expulsion policy at your center
- Focus on the child's strengths and positives
- Teach skills to help the child identify, manage, and communicate their emotions
- Talk it through and rely on your support team
- Work with the family as a team
- Educate yourself and others about expulsion
- Reach out to Sanford CHILD Services for more support if needed

### Sources:

Head Start: Early Childhood Learning and Knowledge Center. (2020). *Understanding and eliminating expulsion in early childhood programs*. Retrieved from <https://eclkc.ohs.acf.hhs.gov/publication/understanding-eliminating-expulsion-early-childhood-programs>

Foundation for Child Development. (2008). *Implementing policies to reduce the likelihood of preschool expulsion*. Retrieved from <https://www.fcd-us.org/implementing-policies-to-reduce-the-likelihood-of-preschool-expulsion/>

## Meet the Staff

ECE REGION 3 DIRECTOR  
Dianna Rajski

CHILD MANAGER  
Rhonda Swanson

ADMINISTRATIVE ASSISTANT  
Shawn Freudenthal

### TRAINING STAFF

Misty Barber  
Nancy Raether  
Rhonda Swanson  
Cassie Weisz

### SANFORD CHILDREN'S CHILD SERVICES

110 6<sup>th</sup> Ave SE, Suite 100  
Aberdeen, SD 57401  
Phone: (605) 226-5675  
(800) 982-6404  
Fax: (605) 262-8509

### CHILD SERVICES

#### OFFICE HOURS

Monday-Friday  
8 a.m. – 5 p.m.

### EMAIL

childservices.aberdeen@  
sanfordhealth.org

### WEBSITE

[www.sanfordhealth.org/  
CHILDservices](http://www.sanfordhealth.org/CHILDservices)

Contact Sanford CHILD Services to get a copy of the Expulsion Prevention Teacher Checklist!



# Infant/Toddler Learning Opportunities

Classes with an emphasis on caring for children six weeks to three year olds. Location details given upon registration.

DATE/TIME	CLASS TITLE	FEE	LOCATION	LICENSING/ PATHWAYS
Thursday, July 29 7 – 8 p.m.	<b>Child Care Essentials: Reducing the Risk of SIDS (O)</b> Protect the children in your care by creating a safe sleep environment to prevent sudden infant death syndrome (SIDS).	\$5	Online	Program Health & Safety
Thursday, July 29 8 – 9 p.m.	<b>Building Confidence with Continuity of Care</b> Want successful children? Stable, consistent relationships matter in infant and toddler care. Learn the 3 different ways to do “continuity of care” in your program and how it contributes to high quality childcare.	\$5	Online	Child Growth & Development
<b>INFANT/TODDLER ENTRY LEVEL SERIES</b>				
(Q) Training series identified in proposed South Dakota QRIS Framework. Registration is encouraged for the entire series.				
Wednesday, July 7 7:30 – 9 p.m.	<b>Ages of Infancy</b> Developmental needs of infants and toddlers as they grow and explore.	\$5	Online	Child Growth & Development
Wednesday, July 14 7:30 – 9 p.m.	<b>Social Emotional Development: Understanding Temperament</b> Understand each infant and toddler's social & emotional development and temperament; appropriate guidance techniques.	\$5	Online	Guidance & Behavior Management
Wednesday, July 21 7:30 – 9 p.m.	<b>How Young Children Learn: Appropriate Environments for Infants &amp; Toddlers</b> Providing appropriate environments and learning experiences that support the learning needs of infants and toddlers.	\$5	Online	Age Appropriate Planning
Wednesday, July 28 7:30 – 9 p.m.	<b>Health &amp; Safety for Infants &amp; Toddlers</b> Best basic health and safety practices in infant and toddler care.	\$5	Online	Program Health & Safety
<b>INFANT/TODDLER BEST PRACTICE SERIES</b>				
(Q) Training series identified in proposed South Dakota QRIS Framework. Registration is encouraged for the entire series.				
Tuesday, September 7 7:30 – 9:30 p.m.	<b>Continuity of Care in Small Infant &amp; Toddler Groups</b> Essential practices of primary care, continuity of care, and small group sizes.	\$5	Online	Child Growth & Development
Tuesday, September 14 7:30 – 9:30 p.m.	<b>Culturally Diverse Caregiving: Partnering with Parents</b> Partnering with families to honor and incorporate children's cultures in everyday caregiving.	\$5	Online	Cultural Diversity
Tuesday, September 21 7:30 – 9:30 p.m.	<b>Responsive Care and Inclusion of All Infants &amp; Toddlers</b> Best practices in providing individualized care; providing inclusive care for children with special needs.	\$5	Online	Inclusion of All Children
Tuesday, September 28 7:30 – 9:30 p.m.	<b>Planning Their Day: Routines, Schedules &amp; Transitions</b> Purposefully planning daily routines, schedules and transitions as part of infant and toddler curriculum.	\$5	Online	Age Appropriate Planning



# Preschool Learning Opportunities

Classes with an emphasis on caring for three to five year old children. Location details given upon registration.

PRESCHOOL ENTRY LEVEL SERIES				
(Q) Training series identified in proposed South Dakota QRIS Framework. Registration is encouraged for the entire series.				
DATE/TIME	CLASS TITLE	FEE	LOCATION	LICENSING/ PATHWAYS
Thursday, September 2 7:30 – 9 p.m.	<b>Child Growth &amp; Development</b> Fostering the growth and development of children through appropriate environment, activities, and interactions.	\$5	Online	Child Growth & Development
Thursday, September 9 7:30 – 9 p.m.	<b>Behavior Management &amp; Guidance</b> Using positive guidance techniques and establishing a program climate that promotes positive behavior.	\$5	Online	Guidance & Behavior Management
Thursday, September 16 7:30 – 9 p.m.	<b>Program Health &amp; Safety</b> Understand the importance of promoting and teaching practices that keep children safe and healthy.	\$5	Online	Program Health & Safety
Thursday, September 23 7:30 – 9 p.m.	<b>Social Interactions and Learning Environments</b> Supporting children's individual needs through learning environments and relationships.	\$5	Online	Learning Environments

# Out of School Time Learning Opportunities

Classes with an emphasis on caring for school age children. Location details given upon registration.

OUT OF SCHOOL TIME ENTRY LEVEL SERIES				
(Q) Training series identified in proposed South Dakota QRIS Framework. Registration is encouraged for the entire series.				
DATE/TIME	CLASS TITLE	FEE	LOCATION	LICENSING/ PATHWAYS
Thursday, September 9 7:30 – 9 p.m.	<b>Child Growth and Development</b> Fostering the growth and development of children through appropriate environment, activities, interactions, and inclusion.	\$5	Online	Child Growth & Development
Thursday, September 16 7:30 – 9 p.m.	<b>Program Health &amp; Safety</b> The importance of implementing teaching practices that promote child health and safety.	\$5	Online	Program Health & Safety
Thursday, September 23 7:30 – 9 p.m.	<b>Fostering Learning Environments</b> Supporting children's individual needs through learning environments and relationships.	\$5	Online	Learning Environments
Thursday, September 30 7:30 – 9 p.m.	<b>Behavior Management and Guidance</b> Providers will look at importance of using positive guidance techniques and establishing a program climate that promotes positive behavior.	\$5	Online	Guidance & Behavior Management



# Social Emotional Learning Opportunities

Ideas and insight to positive guidance and behavior management techniques. Location details given upon registration.

DATE/TIME	CLASS TITLE	FEE	LOCATION	LICENSING/ PATHWAYS
Wednesday, September 15 6:30 – 8:30 p.m.	<b>Common Problems....Unexpected Solutions: When Sensory Challenges Cause Misbehavior (And What You Can Do About It)</b> In this presentation, by an Occupational Therapist and Play Therapist, caregivers will learn the basics about sensory challenges and how they can contribute to misbehaviors and receive an overview of what responses and interventions can be most helpful to address the sensory causes of the misbehavior.	\$5	Online	Guidance & Behavior Management
<b>INFANT/TODDLER SOCIAL AND EMOTIONAL FOUNDATIONS FOR LEARNING</b> (Q) Training series identified in proposed South Dakota QRIS Framework. Registration is encouraged for the entire series.				
Wednesday, August 4 7:30 – 9 p.m.	<b>Importance Of Relationships</b> Social emotional development begins at birth & continues throughout life, providing a foundation for meaningful relationships & learning.	\$5	Online	Guidance & Behavior Management
Wednesday, August 11 7:30 – 9 p.m.	<b>Creating Supportive Environments &amp; Routines</b> Explore ways to create meaningful & engaging learning spaces which promote social emotional development & support appropriate behaviors.	\$5	Online	Learning Environments
Wednesday, August 18 7:30 – 9 p.m.	<b>Social Emotional Teaching Strategies</b> Focus on a variety of approaches to support the development of social emotional skills; identify strategies to support social emotional literacy.	\$5	Online	Guidance & Behavior Management
Wednesday, August 25 7:30 – 9 p.m.	<b>Supporting Children's Success</b> Explore the meaning of behaviors & what a child may be attempting to communicate, & how learning social emotional skills affects all development.	\$5	Online	Guidance & Behavior Management

# Management Learning Opportunities

Classes with an emphasis on managing child care programs. Location details given upon registration.

<b>MANAGEMENT SERIES</b> (Q) Training series identified in proposed South Dakota QRIS Framework. Registration is encouraged for the entire series.				
DATE/TIME	CLASS TITLE	FEE	LOCATION	LICENSING/ PATHWAYS
Tuesday, July 6 7:30 – 9:30 p.m.	<b>Management Fundamentals</b> Learn about the importance of effective program management and explore how it affects the child care setting.	\$5	Online	Program Management & Regulations
Tuesday, July 13 7:30 – 9:30 p.m.	<b>Fiscal Fundamentals</b> Learn about tools to help child care programs plan, monitor & track income and expenses. Explore budgets, balance sheets, profit & loss, and more.	\$5	Online	Program Management & Regulations
Tuesday, July 20 7:30 – 9:30 p.m.	<b>Human Resources Fundamentals</b> Learn about staff recruitment, retention, training and staff evaluations to maintain a successful child care program.	\$5	Online	Program Management & Regulations
Tuesday, July 27 7:30 – 9:30 p.m.	<b>Power of Partnerships</b> Increase skills for building a strong community and team of committed staff.	\$5	Online	Interpersonal Communication & Relationships

## JUST A REMINDER.....

Cancellation – Please remember, if you register for a class and are unable to attend, it is a courtesy to call and cancel your registration.



## fitCare Learning Opportunities

Classes to help caregivers provide a healthy lifestyle program for children in all child care settings. Location details given upon registration.

DATE/TIME	CLASS TITLE	FEE	LOCATION	LICENSING/ PATHWAYS
Tuesday, July 6 6:30 – 8:30 p.m.	<b><u>We Are What We Eat!</u></b> Creating healthy, nutrition environments.	\$0	Aberdeen	Nutrition for Children Learning Environments
Monday, August 16 6:30 – 8:30 p.m.	<b><u>Mindful Moments!</u></b> Supporting children's social and emotional development.	\$0	Online	Guidance & Behavior Management Age Appropriate Planning
Tuesday, September 7 6:30 – 8:30 p.m.	<b><u>We Are What We Eat!</u></b> Creating healthy nutrition environments.	\$0	Online	Nutrition for Children Learning Environments
Saturday, September 11 9 – 10:30 a.m.	<b><u>Sweet Dreams!</u></b> Exploring strategies for Sleep and Relaxation	\$0	Aberdeen	Program Health & Safety Learning Environments
Saturday, September 11 10:30 a.m. – Noon	<b><u>Mindful Moments!</u></b> Supporting Children's Social and Emotional Development.	\$0	Aberdeen	Guidance & Behavior Management Age Appropriate Planning
Saturday, September 11 1 – 2:30 p.m.	<b><u>We Are What We Eat!</u></b> Creating Healthy Nutrition Environments.	\$0	Aberdeen	Nutrition for Children Learning Environments
Saturday, September 11 2:30 – 4 p.m.	<b><u>Ready, Set, Move!</u></b> Promoting Physical Activity and Development	\$0	Aberdeen	Child Growth & Development Age Appropriate Planning

## Family Child Care Provider Focus Learning Opportunities

Classes specific to care provided in family child care settings. Location details given upon registration.

FAMILY CHILD CARE BEST PRACTICE SERIES				
(Q) Training series identified in proposed South Dakota QRIS Framework. Registration is encouraged for the entire series.				
DATE/TIME	CLASS TITLE	FEE	LOCATION	LICENSING/ PATHWAYS
Thursday, August 5 7:30 – 9:30 p.m.	<b><u>Purposeful Planning: Healthy &amp; Safe Learning Environments</u></b> High quality practices to ensure children's physical and developmental well-being; comprehensive health & safety program planning.	\$5	Online	Program Health & Safety
Thursday, August 12 7:30 – 9:30 p.m.	<b><u>Best Practices In Relationship Building</u></b> Best practices for caring, respectful, & committed relationships with and between children & families; balancing parenting & caregiving roles.	\$5	Online	Interpersonal Communication & Relationships
Thursday, August 19 7:30 – 9:30 p.m.	<b><u>Developmentally Appropriate Learning Activities In Family Child Care</u></b> High quality practices for providing activities & materials to support children in developing skills & gaining an understanding of their world.	\$5	Online	Child Growth & Development
Thursday, August 26 7:30 – 9:30 p.m.	<b><u>Professional &amp; Business Practices In Family Child Care</u></b> High quality, caring, and ethical best practices for professional and business policies & procedures.	\$5	Online	Program Management & Regulations

# Pathways to Professional Development Series

- Open enrollment allowed for each course of the series. Registration per class is not available. Participants must register for all classes that are part of a course.
- Out-of-class time work required for course credit.
- Complete your CDA and take all three courses of the Pathways to Professional Development Series to receive college credit when you enroll in participating South Dakota colleges and universities.

DATE/TIME	CLASS TITLE	FEE	LOCATION	LICENSING/ PATHWAYS
<b>How Children Learn and Grow (SDCDA 310)</b>				
Monday, July 12 7:30 – 10 p.m.	<b>Theories of Child Development: Prenatal, Birth &amp; Early Brain Development</b> Overview of the latest research in early brain development and its impact and applications for ECE professionals.	\$25	Online	Child Growth & Development
Monday, July 19 7:30 – 10 p.m.	<b>Theories of Child Development: Dewey &amp; Montessori</b> Overview of research methods and the history of theories of child development; the theories of Dewey & Montessori.		Online	Child Growth & Development
Monday, July 26 7:30 – 10 p.m.	<b>Theories of Child Development: Erikson, Bronfenbrenner &amp; Bandura</b> Developmental theories of Erikson, Bronfenbrenner & Bandura; ongoing critical thinking and comparison of various theories.		Online	Child Growth & Development
Monday, August 2 7:30 – 10 p.m.	<b>Theories of Child Development: Piaget, Vygotsky &amp; Gardner</b> Developmental theories of Piaget & Vygotsky; professional and personal implications of Gardner's theories of multiple intelligences.		Online	Child Growth & Development
Monday, August 9 7:30 – 10 p.m.	<b>Growth and Development of School-Age Children</b> Overview of school age children's growth and development.		Online	Child Growth & Development

## Saturday Spectacular

One-day events with classes for childcare caregivers of various ages and settings.

### fitCare SATURDAY SPECTACULAR | SEPTEMBER 11

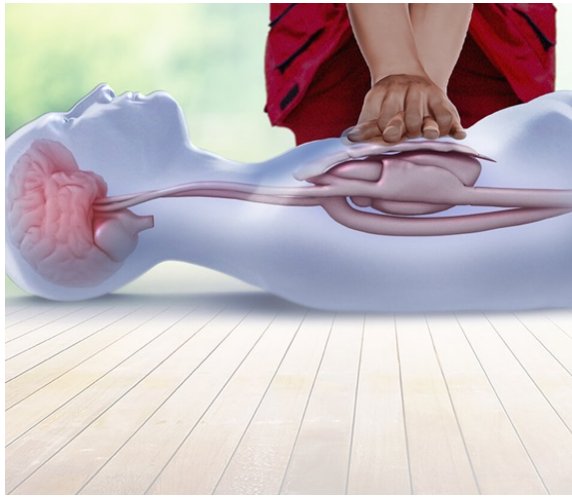
DATE/TIME	CLASS TITLE	FEE	LOCATION	LICENSING/ PATHWAYS
Saturday, September 11 9 – 10:30 a.m.	<b>Sweet Dreams!</b> Exploring strategies for Sleep and Relaxation	\$0	Aberdeen	Program Health & Safety Learning Environments
Saturday, September 11 10:30 a.m. – Noon	<b>Mindful Moments!</b> Supporting Children's Social and Emotional Development.			Guidance & Behavior Management Age Appropriate Planning
Saturday, September 11 1 – 2:30 p.m.	<b>We Are What We Eat!</b> Creating Healthy Nutrition Environments.			Nutrition for Children Learning Environments
Saturday, September 11 2:30 – 4 p.m.	<b>Ready, Set, Move!</b> Promoting Physical Activity and Development			Child Growth & Development Age Appropriate Planning

## Ongoing Health & Safety Training Available for Child Care Providers

The Department of Social Services with support from the Early Childhood Enrichment (ECE) system recently launched the Level II Health & Safety Training series.

The Level II online, on-demand series is designed to meet ongoing training requirements for staff working in state licensed and registered childcare programs who have completed the SD Orientation to Child Care series.

The Health & Safety Level II trainings are required to be completed within 5 years following the completion of the orientation training.



## Online CPR Training Option

Providers have an option to complete the education portion online and conduct face to face skill testing in Aberdeen.

Below is the process to conduct the education portion online and skill testing face to face in Aberdeen:

- Complete the online course (cost of \$15)
- After completion of the online course, you will have 60 days to complete the face to face skill testing portion
- Contact our office to schedule 1:1 skill testing. Certificate of completion of online course must be brought to skill testing.

For additional questions or to schedule a 1:1 skill testing, please call 605-226-5675 or 1-800-982-6404.

## ECE Class Policy

### e-Learning Online Classes

**REQUIREMENTS:** Computer with internet connectivity; check [http://wcservices.adobeconnect.com/common/help/en/support/meeting\\_test.htm](http://wcservices.adobeconnect.com/common/help/en/support/meeting_test.htm) for complete system requirements. Class registration closes 48 hours prior to scheduled class start time. Monday class registration closes at 5 p.m. on the Thursday prior to the class. Class registration is secured once payment is received. Participants are emailed the class link within 24 hours prior to scheduled class start time.

In order to receive credit for online classes, participants must:

1. Log into class within 5 minutes of the class start time.
2. Demonstrate attendance by participating in class polls and chats
3. Complete 3 learning statements at the end of the class.

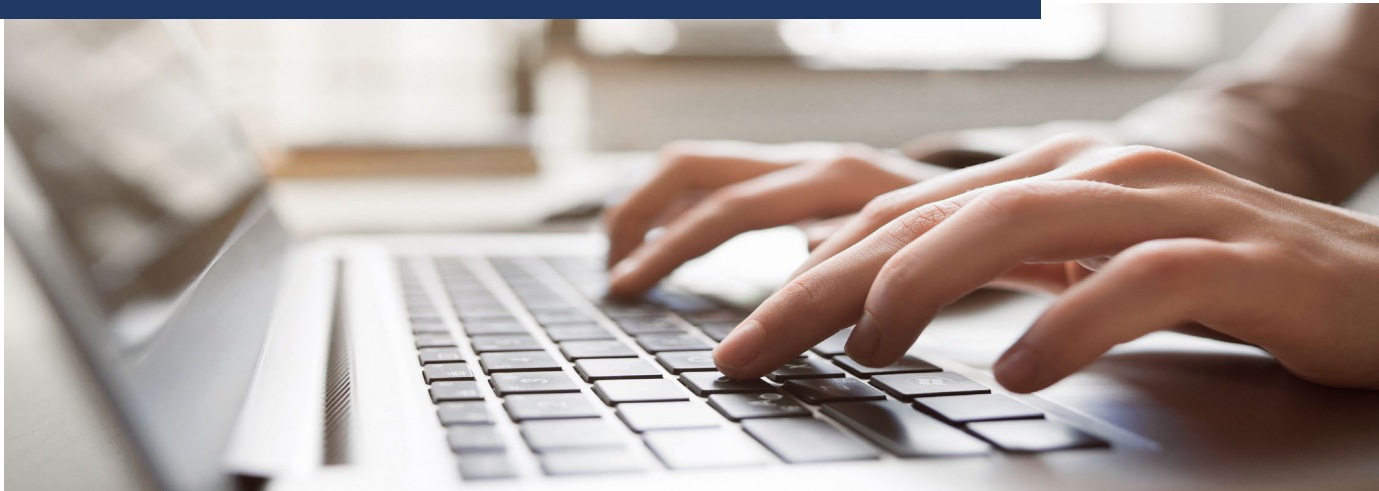
### Face to Face Classes

1. In order to ensure the health and safety of the participants and instructor, a face mask is required.
2. Class participants arriving later than 10 minutes past the class start time will not be allowed to attend class as the facility doors will be locked.
3. In order to maintain an appropriate learning environment for all class attendees, children are not allowed to attend classes with a class participant.

## REGISTER ONLINE FOR CLASSES!

To register online, follow the steps below.

1. Go to [www.sanfordhealth.org/classes-and-events](http://www.sanfordhealth.org/classes-and-events)
2. Filter by 'Daycare Providers' under the Category drop down
3. Locate the class you want to attend
4. Click on the class to find the online class registration information





**Sanford Children's CHILD Services**  
 110 6<sup>th</sup> Ave SE, Suite 100  
 Aberdeen, SD 57401

**2021 TRAINING SCHEDULE**  
 JULY/AUGUST/SEPTEMBER  
 These classes meet the South Dakota child care training requirements for licensing and registration.

## CPR & Certified First Aid (O)

(Location details given upon registration)

### CPR and First Aid Class Registration and Payment Policy:

Certified First Aid & CPR reservation is not confirmed until payment is received. If payment has not been received 24 hours prior to the start of the class, this class reservation will be given to the first participant that secures this reservation with a payment.

In order to ensure the health and safety of the participants and instructor, a face mask is required.

### CPR and First Aid Class Refund Policy:

Class cancellation is required prior to the start of class; otherwise, payment will be forfeited and is non-transferrable.

Additional classes may be added; check the website for updates

## Heartsaver® CPR AED (O)

**CPR Policy:** This video-based, instructor-led course teaches adult, child and infant CPR, AED use, and how to relieve choking. This course teaches skills with American Heart Association's practice-while-watching technique, which allows instructors to observe the students and provide feedback.

### 2021 Class Dates:

Saturday, August 7 | 8:30 – Noon.

### Location:

Aberdeen

### Fee/Class:

\$20

## Certified First Aid (O)

The American Heart Association's new Heartsaver Pediatric First Aid Course offers pediatric first aid training solutions for child care providers. This course contains information on how to manage illness and injuries in a child in the first few minutes until professional help arrives. A Heartsaver Pediatric First Aid Course Completion Card will be emailed to students upon successful completion of the course.

### Class Dates:

Saturday, August 7 | 1 – 3:30 p.m.

### Location:

Aberdeen

### Fee/Class:

\$5

***See page 7 for information on a new online CPR training option!***

Check out our classes online at [www.sanfordhealth.org/CHILDServices](http://www.sanfordhealth.org/CHILDServices). Register for classes by calling (605) 226-5675 or 1-800-982-6404.