

# Sanford South University Hospital Fargo – Acute Rehabilitation

Serving the region since 1984.

CARF Accredited – Aspiring to Excellence in Rehabilitation since 1991.

Patient Outcomes FY 2019 – General Rehab – “Believe You Can Achieve”



As a person interested in the rehabilitation unit, you have the right to know about us. We recognize you have a choice in health care services and we want to thank you for considering/choosing Sanford Health.

We served 333 patients in FY 2019 with an average length of stay of 14.0 days.

## For Your Information

Impairment	# of Patients in FY 2019	Average Length of Stay
Stroke	156	14.2
Brain	66	13.6
Ortho	14	7.8
Neurologic Conditions	6	8.8
Spinal Cord	27	18.6
Amputation	4	12.3

Patient Statistics	Sanford	Region
Average Age	60.9	64.8
Medicare as primary insurance	45.9%	48.4%
Discharged to community	66.4%	78.8%
Discharged back to hospital	10.2%	7.9%
Discharged to long term care	23.1%	12.9%

Patients participate in at least 3 hours of therapy per day, 5 of 7 days a week, while having their program and medical needs managed by Rehabilitation MD Specialists, Hospitalists, Rehab Nurses, Therapists, and other specialists as needed.

## Patient Satisfaction Surveys

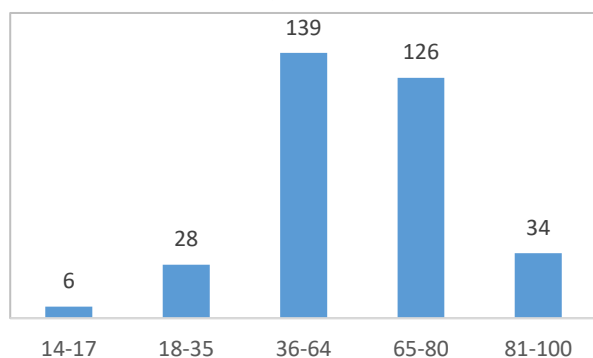
Likelihood of recommending hospital to others:
<ul style="list-style-type: none"> <li>93.3% rated very good or good.</li> </ul>
Overall care at hospital:
<ul style="list-style-type: none"> <li>93.3% rated very good or good.</li> </ul>
Rehab program helped you meet goals:
<ul style="list-style-type: none"> <li>91.7% rated very good or good.</li> </ul>

## 90 Day Follow-Up Surveys

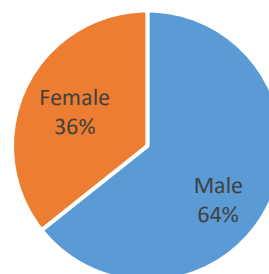
Recommend Rehab program?
<ul style="list-style-type: none"> <li>100%</li> </ul>
Satisfaction with Rehab?
<ul style="list-style-type: none"> <li>95.5%</li> </ul>
Satisfied with education and training?
<ul style="list-style-type: none"> <li>100%</li> </ul>

Patients on this unit are 14 years and older. Younger patients are evaluated on an individual basis for appropriate admission.

## FY 2019 Age Distribution



## FY 2019 Gender Distribution



For more information about the Sanford Health inpatient rehabilitation unit, please visit us online at [sanfordhealth.org](http://sanfordhealth.org) keyword: rehabilitation.

Data from UDSMR and Press Ganey FY 2019

<b>Education efforts include: GREAT for Discharge (Patient &amp; Family Education Classes)</b>	
<ul style="list-style-type: none"> <li>• Nursing –               <ul style="list-style-type: none"> <li>○ CVA Class</li> </ul> </li> <li>• Physical Therapy –               <ul style="list-style-type: none"> <li>○ Safety in the Home</li> </ul> </li> <li>• Occupational Therapy –               <ul style="list-style-type: none"> <li>○ Driving After Rehab</li> </ul> </li> <li>• Speech Language Pathology –               <ul style="list-style-type: none"> <li>○ Cognition</li> <li>○ Dysphagia</li> <li>○ Language</li> </ul> </li> <li>• Recreational Therapy –               <ul style="list-style-type: none"> <li>○ Community Re-entry</li> <li>○ Mindfulness</li> </ul> </li> </ul>	<ul style="list-style-type: none"> <li>• Case Management –               <ul style="list-style-type: none"> <li>○ Insurance &amp; Discharge Planning</li> </ul> </li> <li>• Nutrition Therapy –               <ul style="list-style-type: none"> <li>○ What you need to know regarding Nutrition</li> </ul> </li> <li>• Pharmacy –               <ul style="list-style-type: none"> <li>○ Blood Pressure Medications</li> <li>○ Heart Burn Medications</li> <li>○ Medication Disposals</li> </ul> </li> </ul>

<b>What our Rehab has to offer Patients / Families / Acute Teams:</b>
<p>Interdisciplinary Team</p> <ul style="list-style-type: none"> <li>• Nursing has over 454 years of rehab experience               <ul style="list-style-type: none"> <li>○ 47.8% of nurses on rehab are certified.</li> </ul> </li> <li>• Occupational Therapy has over 125 years of rehab experience               <ul style="list-style-type: none"> <li>○ Trained to assess and manage visual disturbances</li> <li>○ Have Neuro-Ophthalmology on site!</li> <li>○ Driving program to address concerns post rehab stay on site!</li> </ul> </li> <li>• Physical Therapy has over 107 years of rehab experience</li> <li>• Speech Language Pathology has over 107 years of rehab experience               <ul style="list-style-type: none"> <li>○ Trained in dysphagia treatments and video fluoroscopic swallow studies</li> </ul> </li> <li>• Recreational Therapy – 2 full time staff               <ul style="list-style-type: none"> <li>○ Offers community outings for re-entry into the community</li> <li>○ Leads and organizes our Brain Injury support group</li> </ul> </li> <li>• Multiple therapists are Certified Brain Injury Therapists available in both Inpatient and Outpatient Programming</li> <li>• 24/7 internal medicine availability in house for medical management / emergency needs with the ability to provide services such as lab, x-ray, dialysis, respiratory care, etc. ON SITE</li> <li>• Sanford Medical Center in Fargo is:               <ul style="list-style-type: none"> <li>○ Advanced Comprehensive Stroke Certified (the only one in ND)</li> <li>○ Certified Level 1 Trauma Center</li> <li>○ Non-Profit Organization</li> </ul> </li> </ul>

For more information about the Sanford Health inpatient rehabilitation unit, please visit us online at [sanfordhealth.org](http://sanfordhealth.org) keyword: rehabilitation.

*Data from UDSMR and Press Ganey FY 2019*