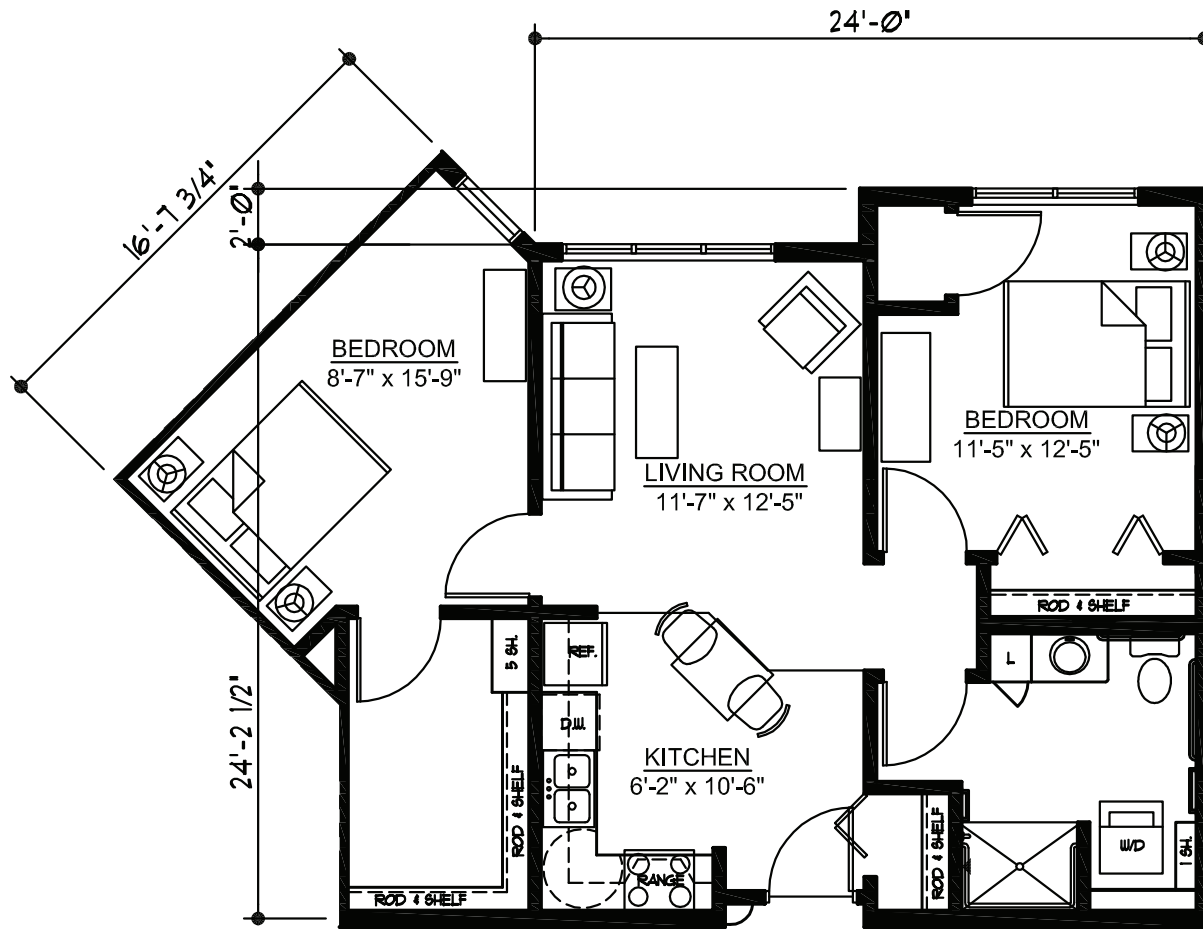


WindSong F-unit



Two bedroom

857 square feet

(Dimensions and square footage may vary)

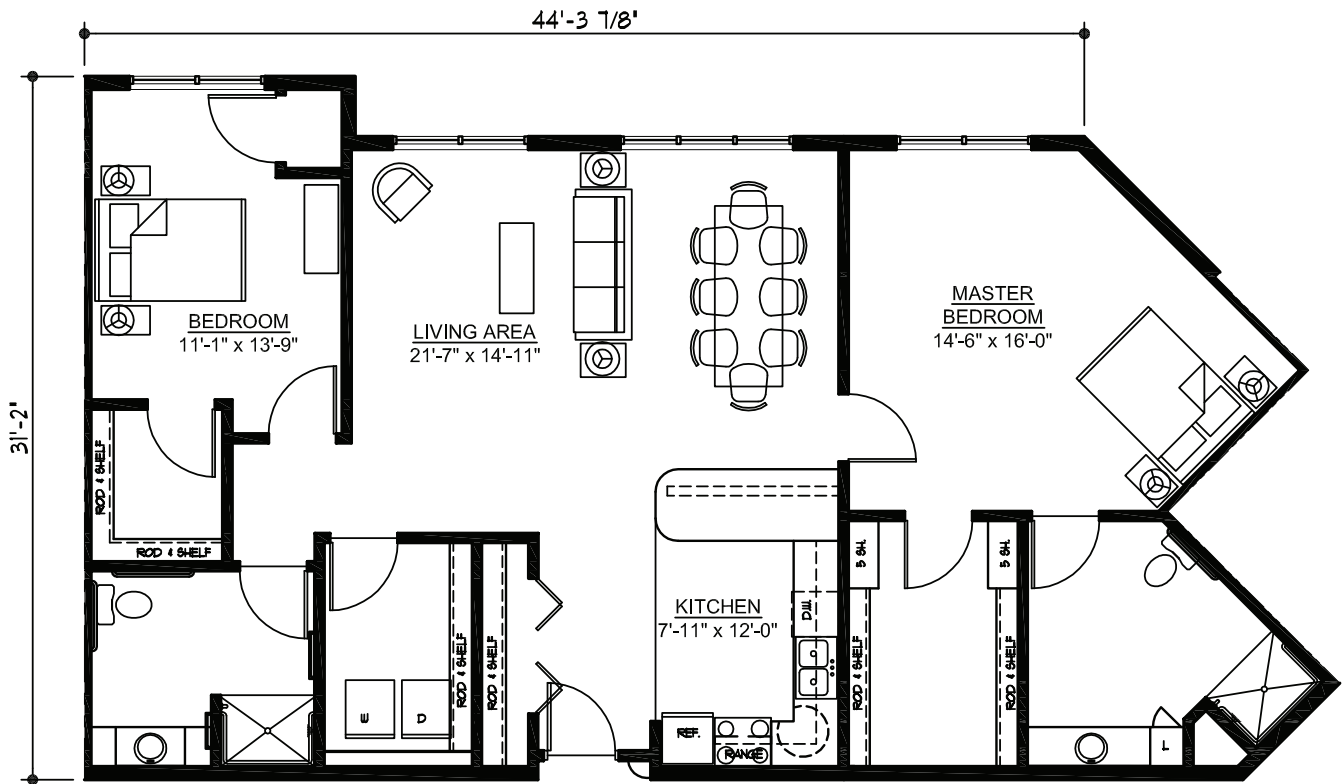
Sanford Health WoodsEdge

(218) 333-6128

1000 Anne St. NW • Bemidji, MN 56601

sanfordhealth.org

WindSong D3-unit



Two bedroom

1482 square feet

(Dimensions and square footage may vary)

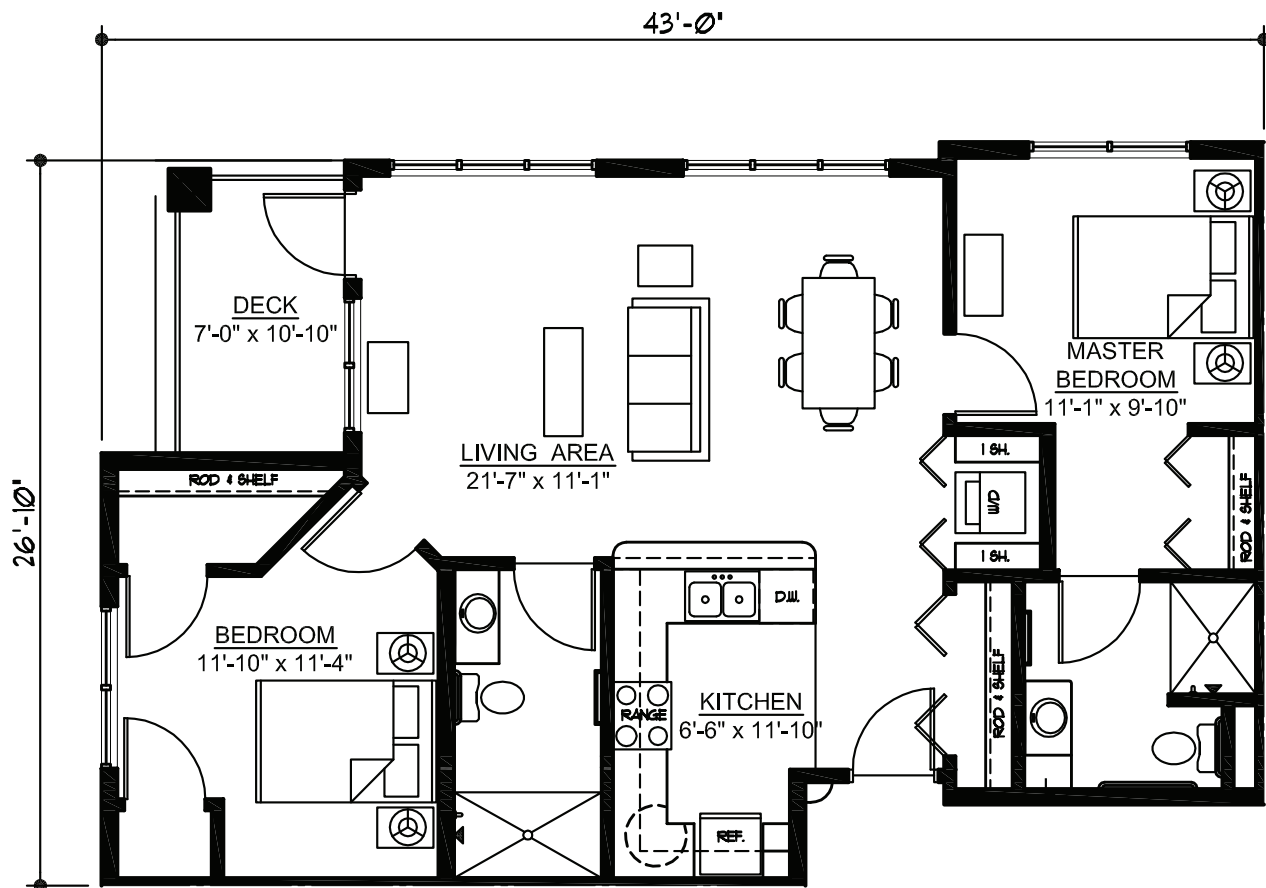
Sanford Health WoodsEdge

(218) 333-6128

1000 Anne St. NW • Bemidji, MN 56601

sanfordhealth.org

WindSong F-unit



Two bedroom

1009 square feet

(Dimensions and square footage may vary)

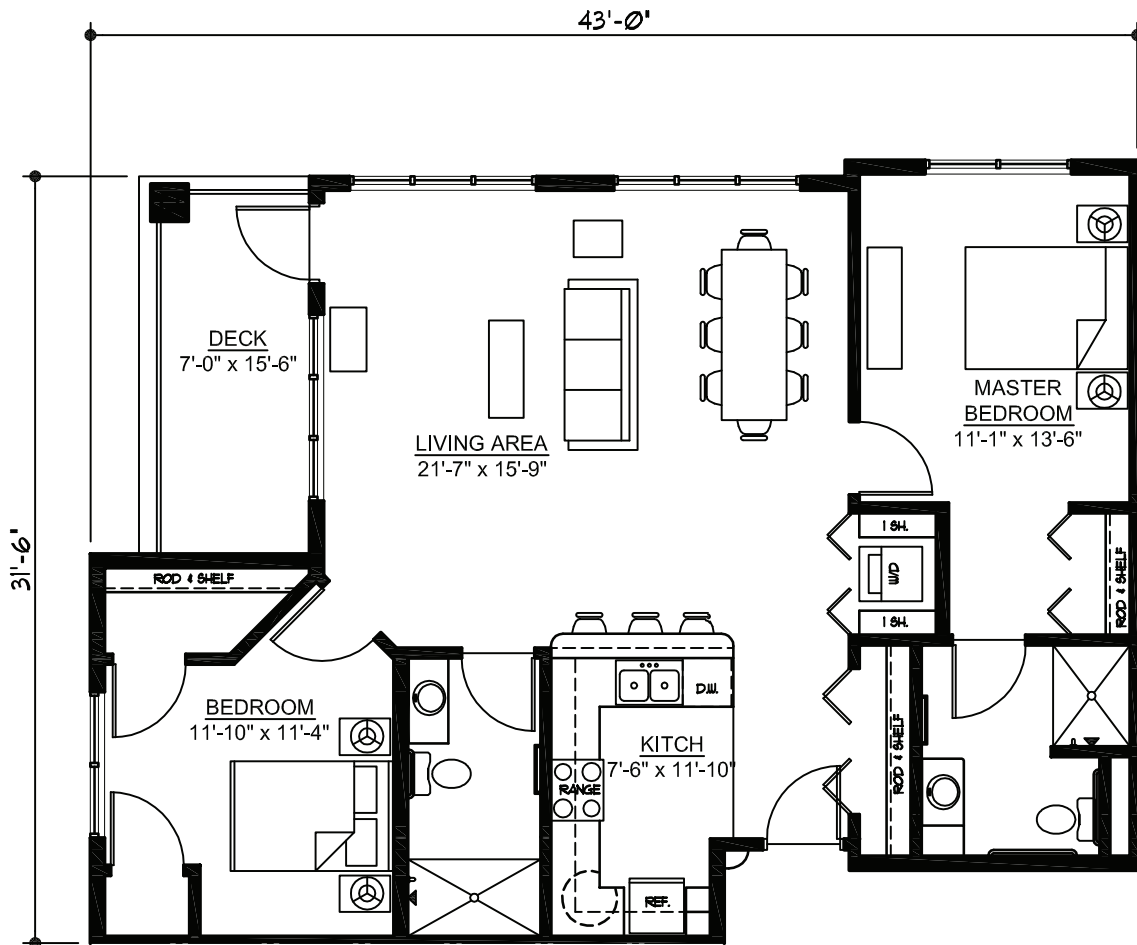
Sanford Health WoodsEdge

(218) 333-6128

1000 Anne St. NW • Bemidji, MN 56601

sanfordhealth.org

WindSong F2-unit



Two bedroom

1168 square feet

(Dimensions and square footage may vary)

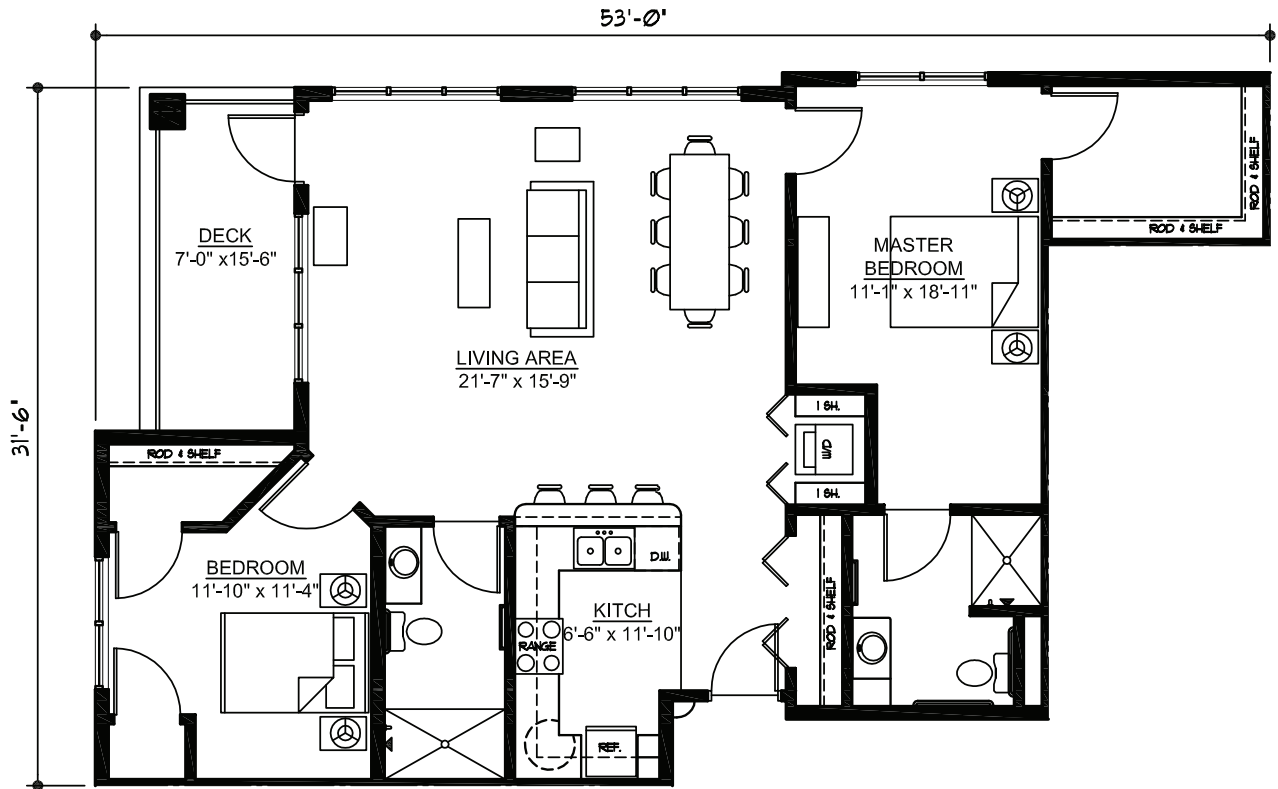
Sanford Health WoodsEdge

(218) 333-6128

1000 Anne St. NW • Bemidji, MN 56601

sanfordhealth.org

WindSong F3-unit



Two bedroom

1246 square feet

(Dimensions and square footage may vary)

Sanford Health WoodsEdge

(218) 333-6128

1000 Anne St. NW • Bemidji, MN 56601

sanfordhealth.org