

A purple speech bubble graphic with a white outline, pointing downwards. It contains white text. The background features a pattern of overlapping concentric circles and arcs in light purple and grey, some solid and some dashed.

# Locations of Stroke:

Front or Back, Left or Right

# Differences & Commonalities in Stroke

WHY?

Why is my stroke so different from others?

Why do I feel the same as others after my stroke?

# Front or Back

Recognize Stroke  
**B E F A S T**

## FRONT = ANTERIOR

- 75-80% of all strokes
- FAST – picks up on strokes in front part of brain
  - FACE - Facial droop
  - ARMS - One sided weakness
  - SPEECH – Issues with speaking or understanding

## BACK = POSTERIOR

- 20-25% of all strokes
- BE-FAST – the “BE” picks up on strokes in back part of brain
  - BALANCE - Balance issues
  - EYES – Vision problems

# Left or Right

## LEFT

- Left side strokes - reported to be more common
  - Is more readily recognized
- Weakness will be on right side
- Speech is often affected

## RIGHT

- Right side strokes – reported to be less common
  - Less easily recognized
- Weakness will be on left side
  - Don't recognize left side of body or weakness

### Frontal Lobe

- Problem solving
- Emotional traits
- Reasoning (judgment)
- Speaking
- Voluntary motor activity

### Parietal Lobe

- Knowing right from left
- Sensation
- Reading
- Body orientation

### Occipital Lobe

- Vision
- Color perception

### Temporal Lobe

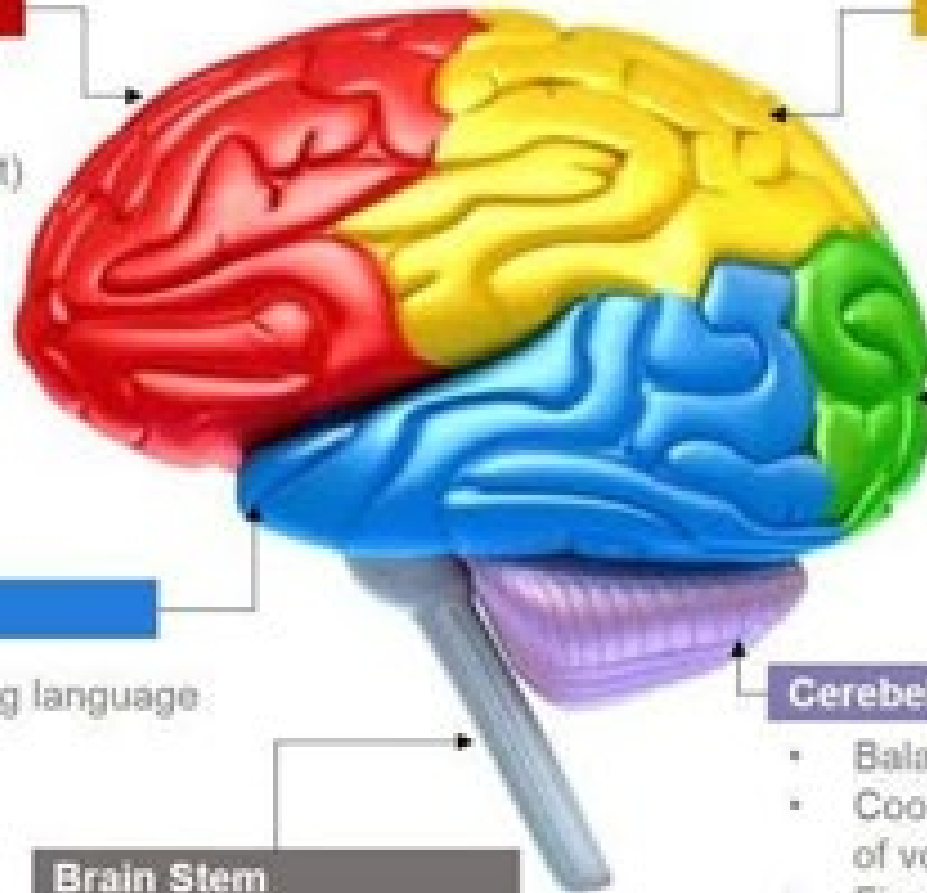
- Understanding language
- Behavior
- Memory
- Hearing

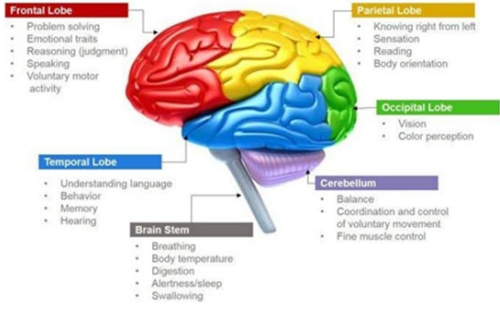
### Cerebellum

- Balance
- Coordination and control of voluntary movement
- Fine muscle control

### Brain Stem

- Breathing
- Body temperature
- Digestion
- Alertness/sleep
- Swallowing





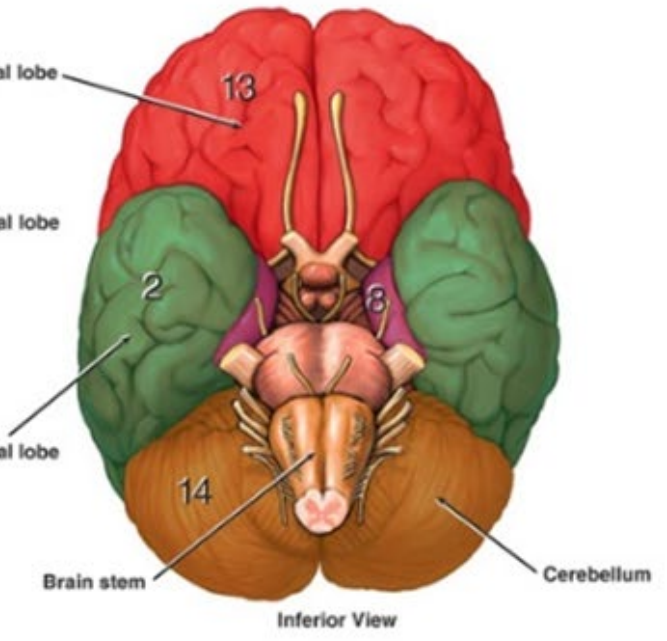
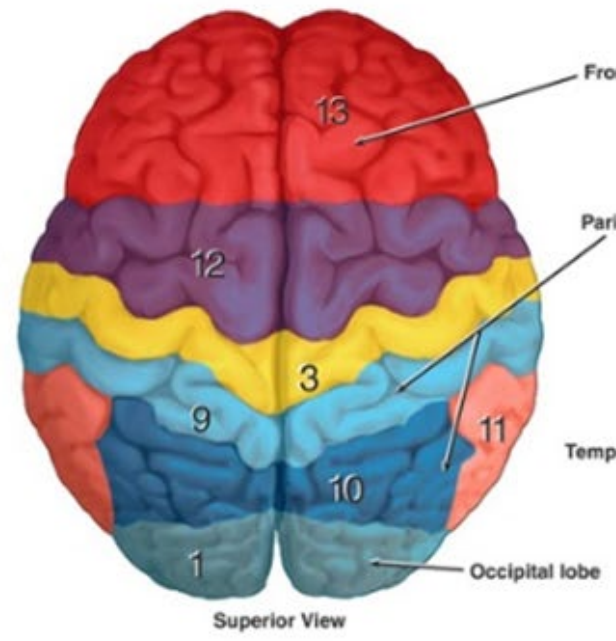
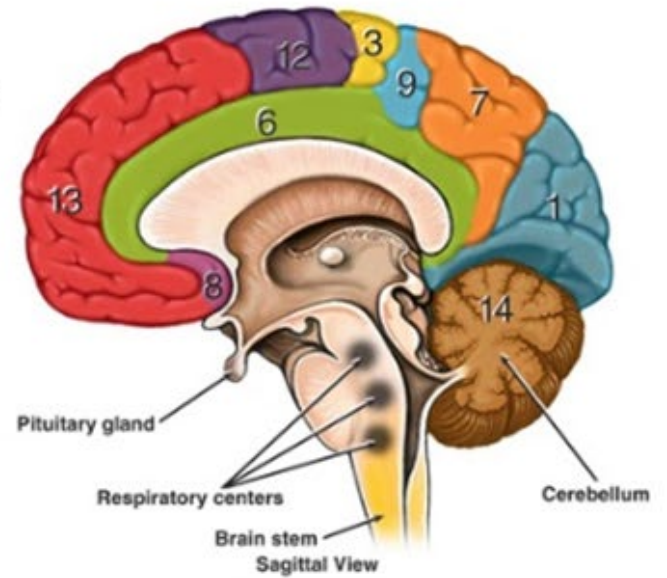
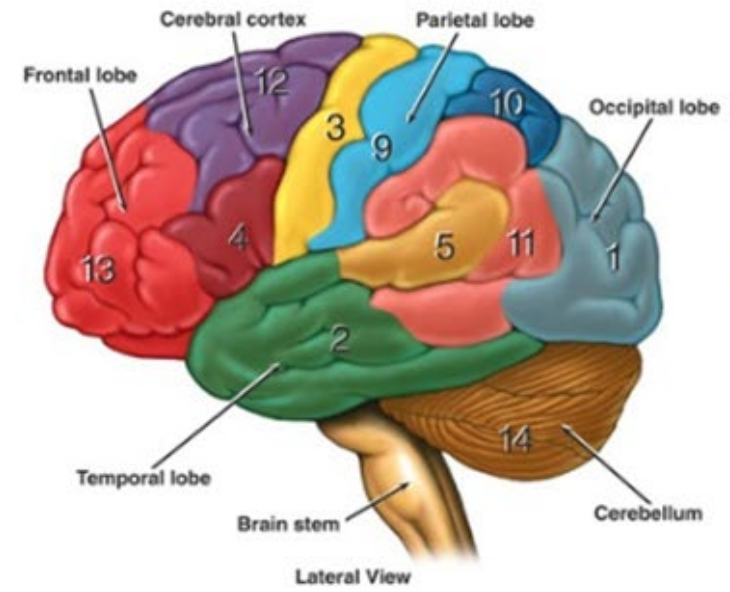
# Anatomy and Functional Areas of the Brain

## Functional Areas of the Cerebral Cortex

- 1 **Visual Area:**  
Sight  
Image recognition  
Image perception
- 2 **Association Area**  
Short-term memory  
Equilibrium  
Emotion
- 3 **Motor Function Area**  
Initiation of voluntary muscles
- 4 **Broca's Area**  
Muscles of speech
- 5 **Auditory Area**  
Hearing
- 6 **Emotional Area**  
Pain  
Hunger  
"Fight or flight" response
- 7 **Sensory Association Area**
- 8 **Olfactory Area**  
Smelling
- 9 **Sensory Area**  
Sensation from muscles and skin
- 10 **Somatosensory Association Area**  
Evaluation of weight, texture, temperature, etc. for object recognition
- 11 **Wernicke's Area**  
Written and spoken language comprehension
- 12 **Motor Function Area**  
Eye movement and orientation
- 13 **Higher Mental Functions**  
Concentration  
Planning  
Judgment  
Emotional expression  
Creativity  
Inhibition

## Functional Areas of the Cerebellum

- 14 **Motor Functions**  
Coordination of movement  
Balance and equilibrium  
Posture



13 – thinking, judgement

3 – movement

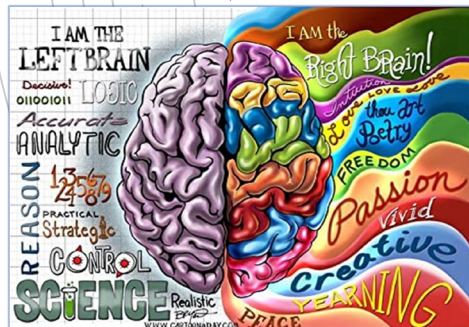
9 – sensory input

4 – speaking

11 – understanding language

Front:

# Left & Right Side Comparison



## LEFT SIDE

Analytical thought

Detail oriented perception

Ordered sequencing

Rational thought

Verbal

Cautious

Planning

Math/science

Logic

Facts

Right side motor skills

Right field vision

## RIGHT SIDE

Intuitive thought

Holistic perception

Random sequencing

Emotional thought

Non-verbal

Adventurous

Impulse

Art / Creative writing

Imagination

Rhythm

Left side motor skills

Left field vision

I AM THE  
LEFT BRAIN

Decisive!  
011001011 LOGIC

Accurate  
ANALYTIC

REASON  
1 2 3 4 5 6 7 8 9  
PRACTICAL  
Strategic

CONTROL

SCIENCE

Realistic  
Brain

WWW.CARTOONADAY.COM



I AM the  
Right BRAIN!

Intuition  
& Love LOVE LOVE  
the art  
Poetry

FREEDOM

Passion  
Vivid

creative

YEARNING

PEACE



Front:

## Right & Left Sides Work Together

The left and right sides:

- Have unique functions
- Work in synch
  - “The left [side] processes details of visible objects; the right processes overall shape.”
  - “The left [side] plays a major role in grammar and decoding literal meaning; the right plays a role in understanding verbal metaphors and decoding indirect or implied meaning.”

Psychology Today, 2014



“Put Your Hands Up”



Back:

# Posterior Strokes

## OCCIPITAL LOBE = VISION

- Strokes in the occipital lobe affects vision
  - Trouble interpreting message from eye

## CEREBELLUM = BALANCE

- Strokes in the cerebellum affects balance & coordination
  - Also can have dizziness, Nausea & Vomiting

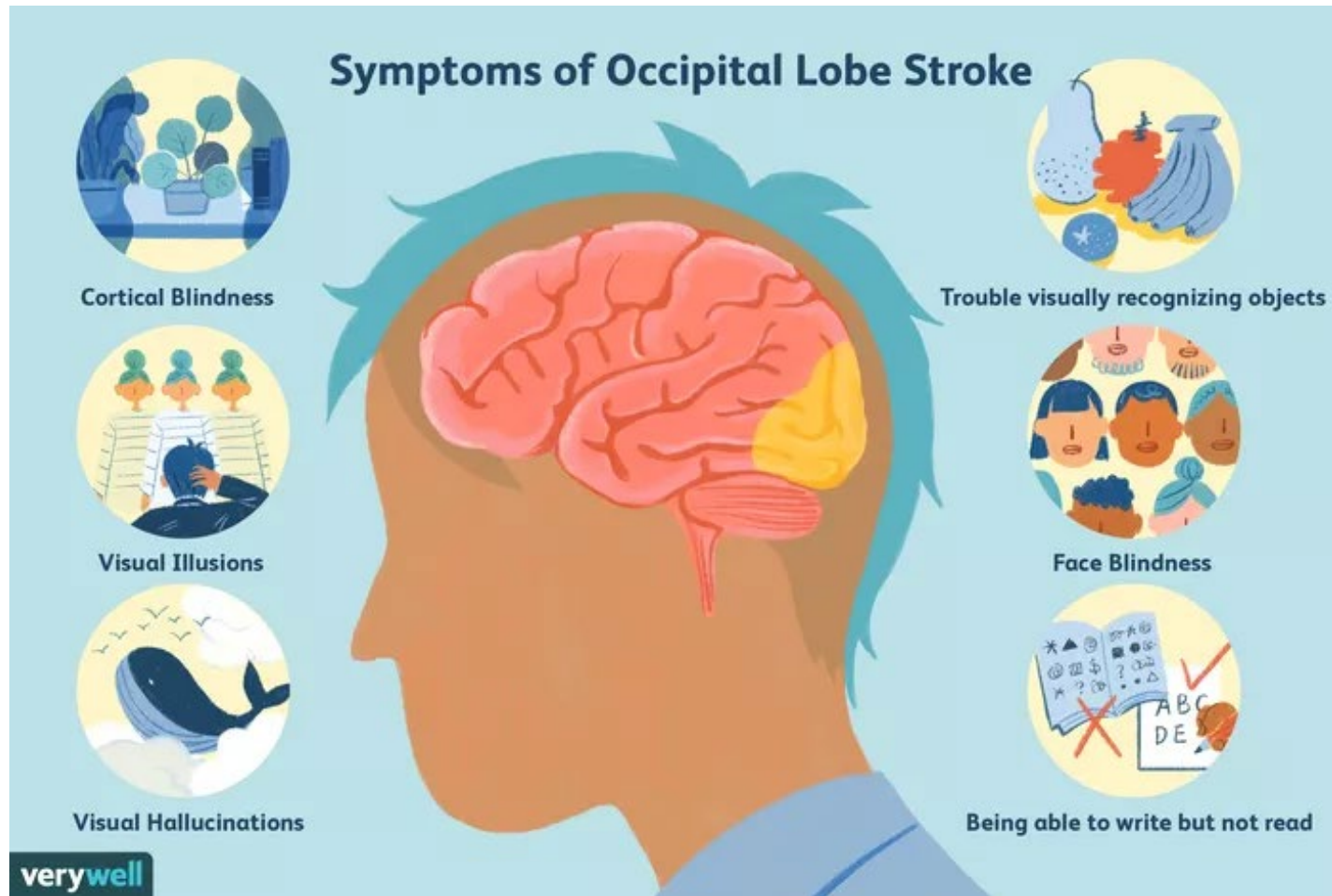
## BRAIN STEM = MAY AFFECT MANY THINGS....

- Trouble swallowing, speaking
- Weakness of limbs, Sensory loss (could be both sides)
- Trouble with vision
- Dizziness, Nausea, Vomiting
- Drowsy

Back:

# Occipital Lobe Strokes

## Symptoms of Occipital Lobe Stroke



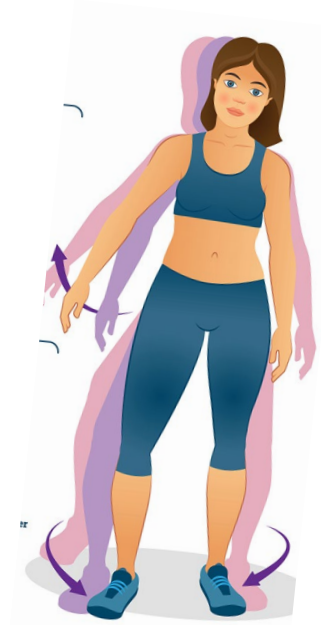
The infographic features a central illustration of a human head in profile, facing left, with the brain highlighted in pink and a yellow area on the occipital lobe. Surrounding the brain are six circular icons, each representing a symptom. The 'verywell' logo is in the bottom left corner.

- Cortical Blindness**: An icon showing a person sitting at a desk with a potted plant and a lamp, representing a loss of vision.
- Trouble visually recognizing objects**: An icon showing various fruits like a pear, apple, and banana, representing difficulty in identifying objects.
- Visual Illusions**: An icon showing a person sitting at a desk with a potted plant and a lamp, representing a loss of vision.
- Visual Hallucinations**: An icon showing a whale swimming in the ocean with birds flying in the sky, representing seeing things that are not there.
- Face Blindness**: An icon showing several different faces, representing difficulty in recognizing faces.
- Being able to write but not read**: An icon showing a person writing on a piece of paper with a pen, representing a disconnect between writing and reading abilities.

verywell

BACK:

# Cerebellar Strokes



**Vertigo**  
strong sense  
of motion or  
spinning



**Disequilibrium**  
feeling off-balance,  
unsteady or  
wobbly



BACK:

# Brain Stem Strokes

## Common Symptoms of a Brainstem Stroke



Difficulty breathing



Difficulty speaking



Problems with  
chewing and  
swallowing



Paralysis



Blurred Vision



Weakness of  
the limbs



Partial or complete  
hearing loss



Numbness or loss  
of sensation



# Differences & Commonalities in Stroke

## Why is my stroke so different from others?

- Location – Front / Back or Left / Right
- Area - Size of stroke
- One or more areas of stroke
- Ischemic / Hemorrhagic (ischemic or bleed)

## Why do I feel the same way after my stroke as others?

- Cognitive symptoms – memory, trouble speaking
- Physical symptoms – weakness, difficulty swallowing
- Emotional symptoms – depression, impulsivity
- Heavy fatigue and trouble sleeping

High Blood Pressure Symptoms

Sudden Death Unhealthy Brain

# STROKE

Medical Cause Headache

Prevent Blood Flow

Ischemic Dangerous

Clogged CVA Quickly Clot

Hemorrhagic Early Warning Sudden

Clot Prevention

Cerebrovascular

Healthcare

Artery Diagnosis

Danger Disability

Signs

Take-Away...

Know what to do  
when you see  
stroke  
symptoms!

## RECOGNIZE STROKE

- Know BEFAST
- Teach BEFAST to others 😊

## CALL 911

- Best to call an ambulance
  - They will notify the hospital and doctor prior to arrival
  - Then the stroke team can be prepared and respond promptly

